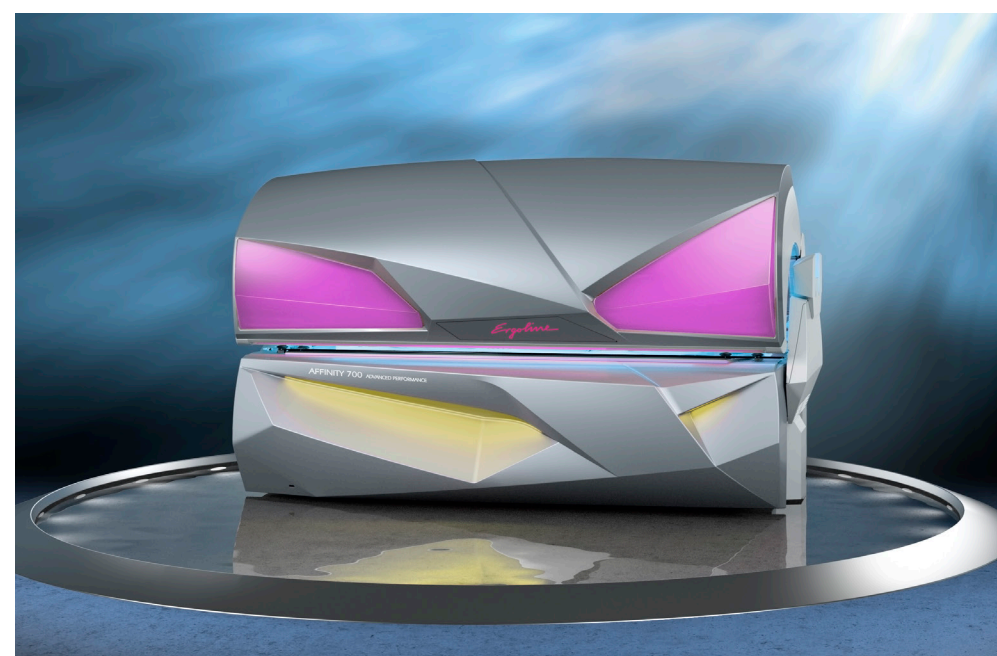




# ERGOLINE AFFINITY 700



## AFFINITY 700

MAXIMUM SESSION TIME: 12 MIN

### OPERATION

- To choose the individual functions please press that function on the control panel
- To set each individual function use the plus and minus buttons

#### 1 LED DISPLAY

The LED Display will help you operate the sunbed, it always shows you the comfort settings and functions you have selected. The functions can be changed by pressing the plus or minus button. If no function has been selected, you will see the elapsed session time and the selected music source.

#### 2 PLUS & MINUS BUTTONS

Adjust settings by using the plus and minus buttons.

#### 3 START/STOP

After a brief delay the UV lamps switch on automatically or you can press the Start/Stop button to begin your session. Pressing the Start/Stop button during the tanning process, will interrupt the session. Please note, that time continues to elapse even when interrupted. To continue the tanning session just press the button again.

#### 4 HEAD VENTILATION 5 BODY VENTILATION

The Ergoline Affinity provides automatically controlled head and body ventilation. Use the plus and minus buttons to adjust the intensity of the fan to suit your individual comfort. You can also adjust the two facial ventilation nozzles to the position that suits you best.

#### 6 FACIAL TANNERS

The facial tanners always start at the highest setting, following a short warm-up at the beginning of a session. Use the up and down arrow buttons to change the tanning power.

#### 7 AIR CONDITION PLUS

If the Ergoline Affinity is equipped with Air Condition you can regulate it with the plus and minus buttons.

#### 8 AQUA FRESH

If the Ergoline Affinity is equipped with Aquafresh, you can control this feature using the plus and minus button. Experience a refreshing mist of during your session to keep you cool and relaxed while tanning.

#### 9 AROMA

If the Ergoline Affinity is equipped with aroma, you can activate this feature after selecting the aroma icon and confirming with the plus button. This function can be switched on or off at any time.

#### 10 MUSIC CHANNEL

If the Ergoline Affinity is equipped with a sound system, you can select various music channels by using the plus and minus buttons. If you have connected your phone or your MP3 player to the sunbed you also can enjoy your personal playlist. Note: Please start your MP3 player before the tanning session.

#### 11 VOLUME

With the volume function you can change the volume of the music. Press the plus button to increase the volume and the minus button for decrease.

#### 12 VOICE GUIDE

If the Ergoline Affinity is equipped the Voice Guide, it will help you to operate the unit during a session. To deactivate the Voice Guide, press the »Voice Guide« button and then »minus«. The Voice Guide can be activated at any time.

## TIPS FOR THE BEST TAN

### ERGOLINE TANNING BEDS

On Ergoline tanning beds you can relax and enjoy the sun, even if it's raining or snowing outside. However, the same rule applies as with tanning outdoors – don't rush it! In other words, never sunbathe more than once a day.

### INDIVIDUAL SKIN TYPE

Depending on skin type, people react differently to sunlight. When tanning in natural sunlight and on tanning beds, it is important to know your own particular skin type.

- Skin type I: pale white skin, blue or green eyes, red hair, many freckles, always burns and never tans.
- Skin type II: beige skin, blue or grey eyes, blonde or light brown hair, some freckles, strong sunburn tendency, but sometimes tans.
- Skin type III: light brown skin, brown eyes and hair, sometimes burns but always tans. Skin type IV: light brown or olive skin, dark brown eyes and hair, sometimes burns and tans readily.
- Skin type V: brown skin, dark brown hair and eyes, rarely burns and tans easily.

### INITIAL EXPOSURE TIME

The initial exposure time, which you should begin with, depends on your skin type, the tanning device and the type of lamps used. Always follow the recommended exposure schedule for your skin type and never exceed the maximum exposure schedule of the tanning device. This should be listed on the front of the tanning unit, or consult with Planet Fitness staff who will advise you on proper procedures. Non-pigmented skin type I should avoid the tanning process.

### SKIN CARE

Your skin needs care before and after tanning. Skin care products that are specifically formulated to work synergistically with the tanning process are recommended because they contain a special combination of ingredients that enhance the tanning process and nourish your skin. For more details inquire with your Planet Fitness Staff.

### PROTECTIVE EYEWEAR

Keep your eyes closed while tanning and always wear protective goggles that block out UV light. Contact lenses should be removed prior to tanning.

### COSMETICS

Before tanning, carefully remove all cosmetics from your skin and take off all jewelry. Do not use any sunscreen lotions during tanning, as these can detract from the tanning effect.

### MEDICATION

If you are taking medication or suffer from a skin disorder, please be aware that certain medicines may be photosensitive. These medications may cause an adverse reaction when the body is exposed to UV light. A list, which identifies many photosensitive medications, foods, and ingredients, should be on display at this location. Always consult your physician if you have any questions or concerns.

### EQUIPMENT HYGIENE

Proper equipment hygiene is of paramount importance to your health. The acrylic area must be cleaned with a special disinfectant before each session.

Toll-Free: 888.771.0996 | [www.jkproducts.us](http://www.jkproducts.us)

**Notice:** Read the mandatory FDA warning label on every tanning machine for important information on potential eye injury, skin cancer, skin aging and photosensitive reaction and proper use. Compliant, protective eyewear must be worn when using any indoor tanning device or system.

#### CONTRAINDICATIONS:

Follow Instructions. Avoid over-exposure as with natural sunlight. Over-exposure may cause eye or skin injury and allergic reactions. Repeated exposure may cause premature aging of the skin and skin cancer. ALWAYS WEAR PROTECTIVE EYEWEAR! Failure to do so may result in severe burns or long term injury to the eyes. Certain medications or cosmetics may increase your sensitivity to ultraviolet radiation. Consult a physician before using sunlamps if you are using medication, have a history of skin problems or believe yourself to be especially sensitive to sunlight. If you do not tan in the sun, you are unlikely to tan from the use of this product. Please refer to the recommended exposure schedule for your skin type and do not tan more than once in a 24-hour period. Attention: This sunlamp product should not be used on persons under the age of 18 years. Persons who should not use this device include anyone who is sunburned, has open wounds, is naturally pale, has discolored patches of skin, has an increased risk of skin cancer, is being treated for or taking medicine causing photosensitivity, is pregnant, has atypical moles or more than 16 moles on their body (2mm diameter or larger).

© 2020 JK Products & Services, Inc.

*Ergoline*